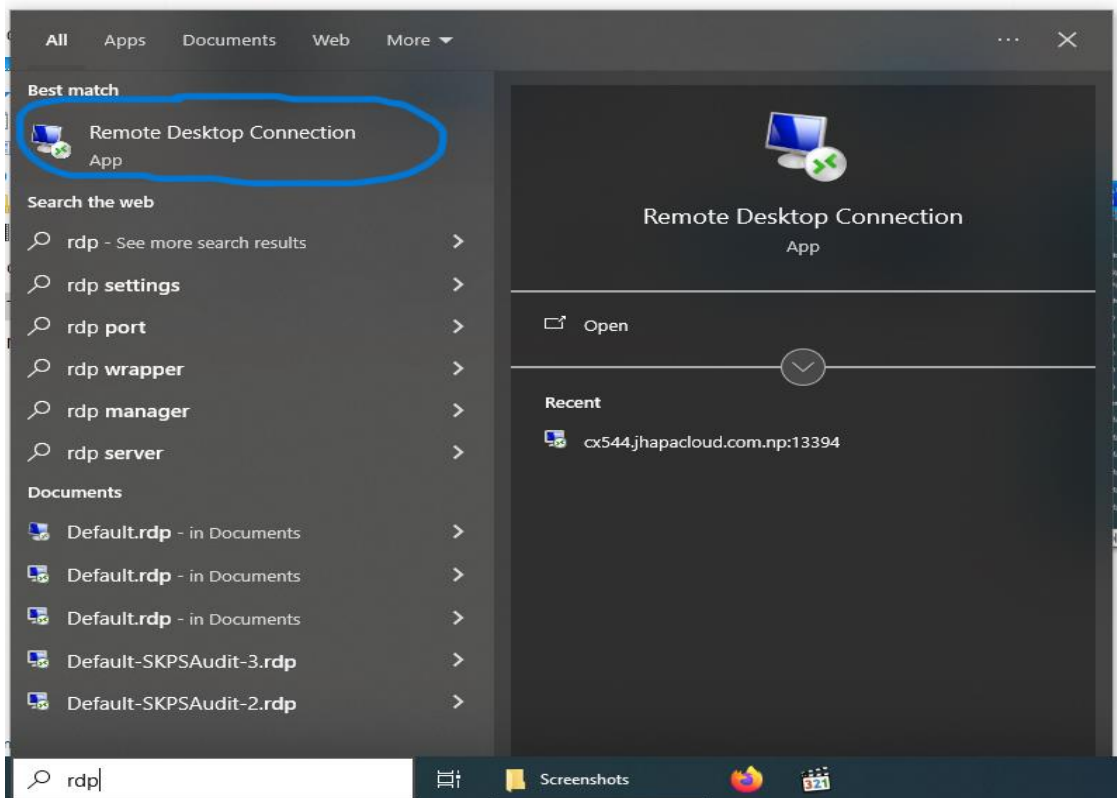
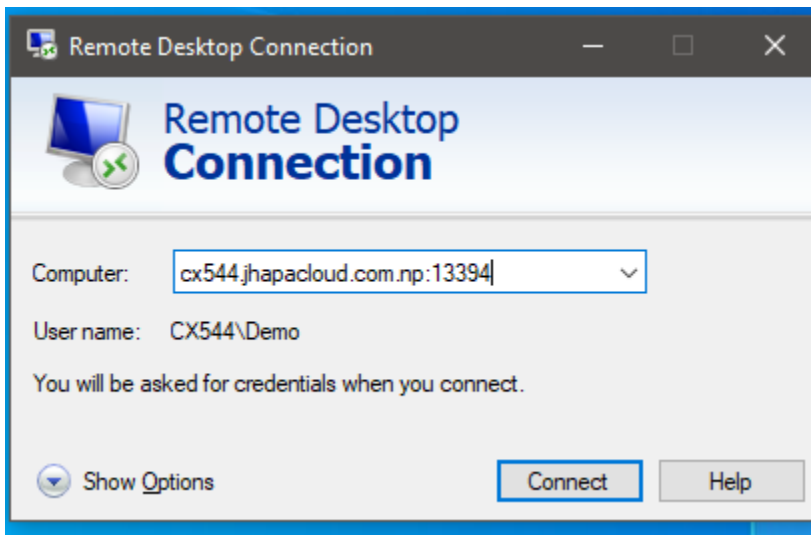


How to use Remote desktop connection of Jhapacloud.com.np

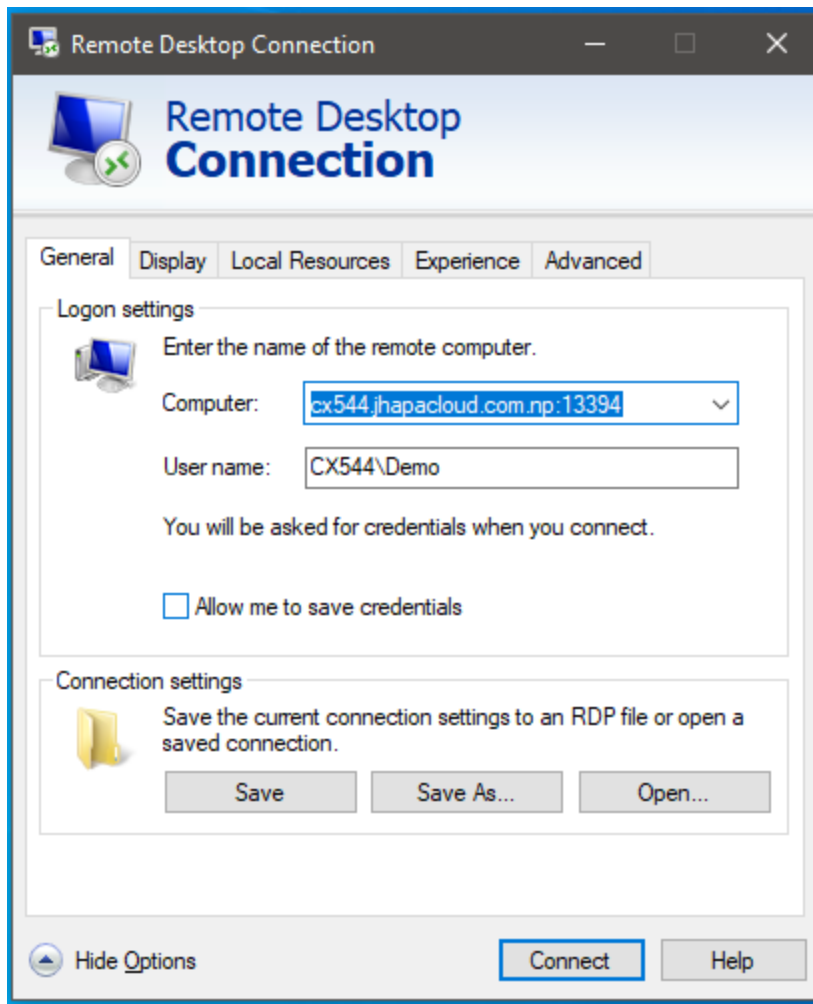
1. Go to windows search bar and type RDP.



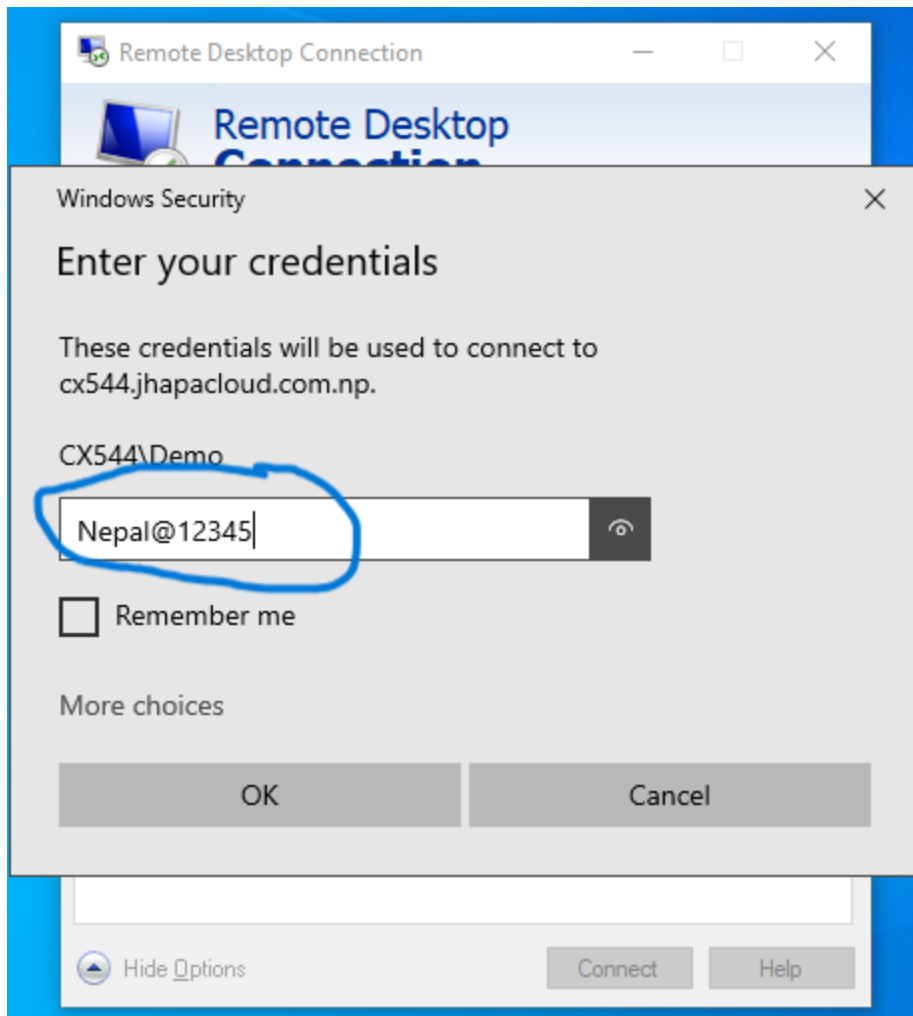
2. Click on Remote Desktop Connection.



Then in computer field type server name as above picture
Computer: cx544.jhapacloud.com.np:13394
Username: CX544\Demo
Then click on Connect

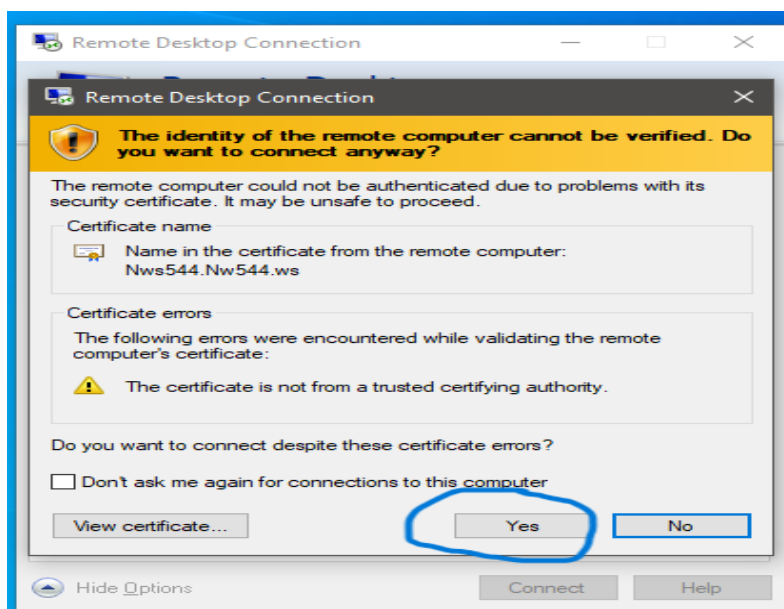


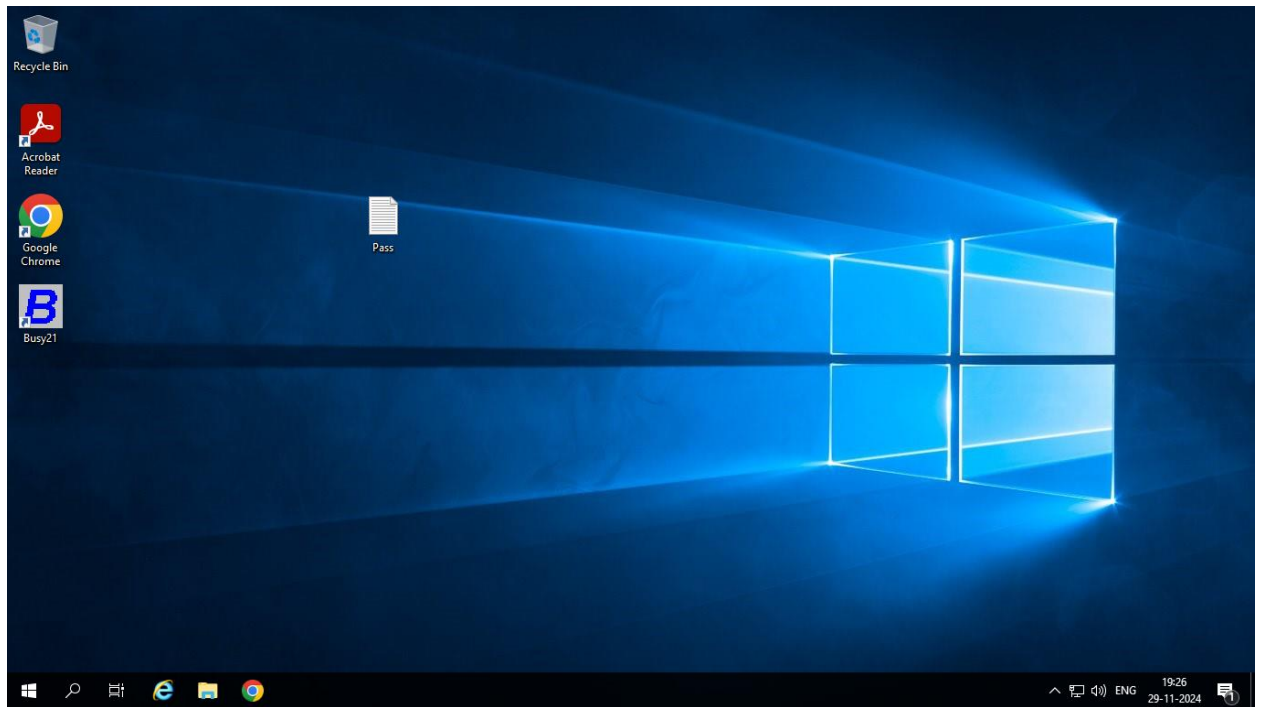
Then password will ask.



Type password Nepal@12345

Click on OK.





Now RDP server is connected you can operate your accounting software from anywhere.